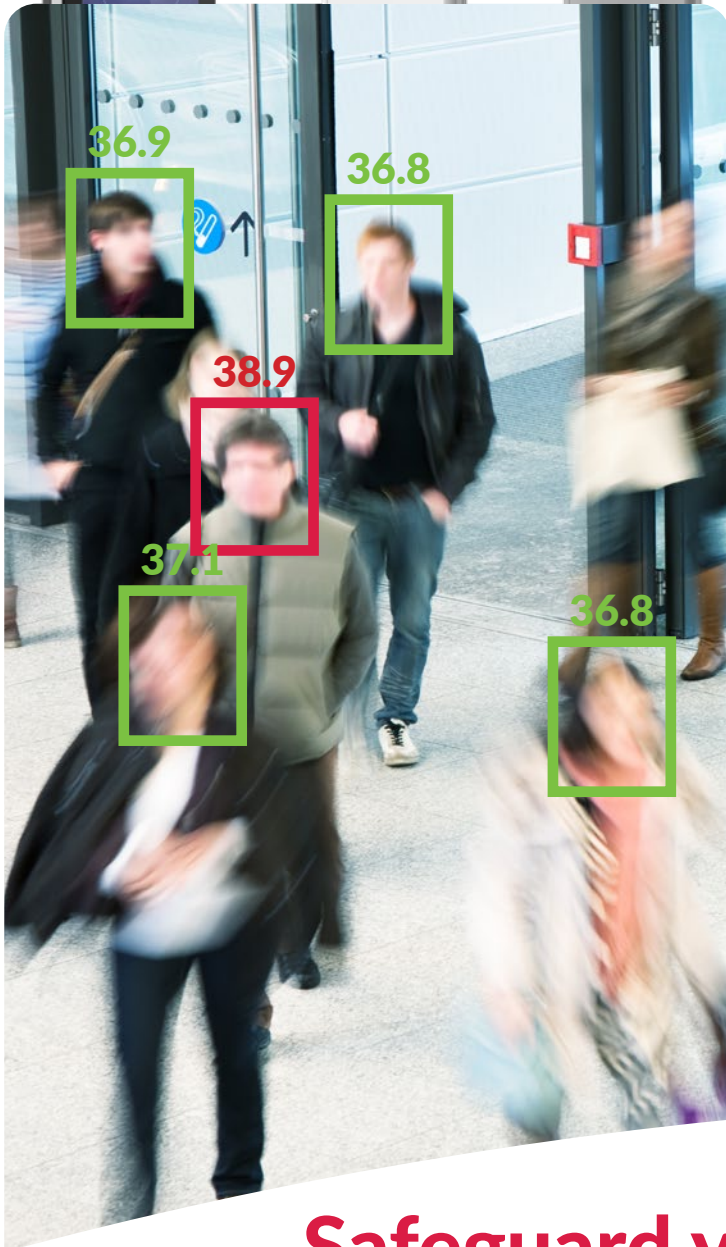




Body Temperature Detection Systems

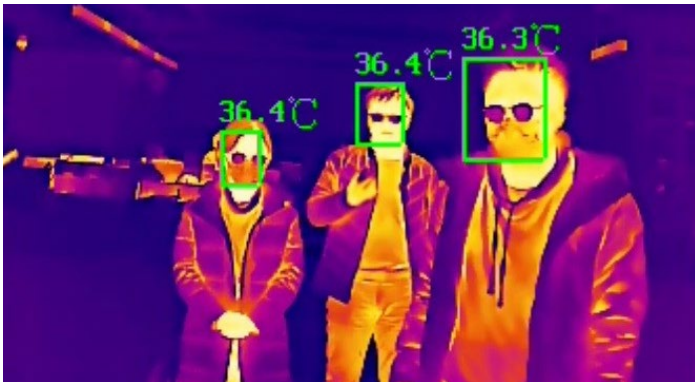


**Safeguard your staff and visitors
by reducing the risk of viral spread**

Detecting Elevated Body Temperature

How the system works

Any object with a temperature above absolute zero will emit a detectable amount of thermal radiation. A thermal camera converts Infra Red radiation into grayscale values, and matches those grayscale values to temperature values through an algorithm model.



Thermal cameras with high temperature accuracy can help detect elevated body temperatures which may indicate the presence of a fever.

Thermal cameras can be used for the elevated body temperature screening of employees, visitors, commuters, shoppers, and construction workers.



Advantages

- **High Efficiency:** It takes less than a second for a thermal camera to detect the temperature of a person, thus allowing large numbers of people to be screened at the same time whilst on the move.
- **Safety:** Thermal cameras generate non-contact temperature measurement of a subject, thereby avoiding unnecessary physical contact.

Creating a Thermal Fever Screening Process

1. Set up a screening channel

Set up a quick screening channel in an indoor space to separate the space into a socially distanced channel in accordance with government guidelines.



2. Thermal camera quick screening

Our thermal fever screening solutions enable you to do a quick and efficient screening of the moving queue, identifying individuals with elevated body temperatures.

3. Secondary thermometer check

For any individual identified with a raised body temperature, we recommend using a calibrated medical thermometer in order to double-check their body temperature.



To find out how we can help you

Call: **01322 479652** or visit **www.clearway.co.uk**

clearway
BUILDING SECURITY & SUPPORT

Clearway Environmental Services (UK) Ltd.
Fountain House, Anchor Boulevard, Crossways Business Park,
Dartford, Kent DA2 6QH

Applications and Features



AI Human Body Detection

Thermographic Cameras fix measurement areas to human bodies, thus reducing false alarms caused by other heat sources.



Embedded Audio Alarms

Built-in audio will trigger an alarm to notify operators immediately when a person with an elevated body temperature is detected.



Unique Self-Developed Algorithm

Proprietary temperature measurement algorithm and big data obtained from multiple cases mean accurate and reliable temperature measurements.



One-Stop Solution

As a leading nationwide provider of complete security solutions, our body temperature detection system can include thermographic cameras, tripod, NVR, network switch and laptop as a one-stop solution.

To find out how we can help you

Call: **01322 479652** or visit **www.clearway.co.uk**

clearway
BUILDING SECURITY & SUPPORT

Clearway Environmental Services (UK) Ltd.
Fountain House, Anchor Boulevard, Crossways Business Park,
Dartford, Kent DA2 6QH

Frequently asked questions

Q: Can the fever screening thermographic camera be installed outdoors?

A: The surface temperature of human bodies is easily affected by the wind and sun and may also impact the camera's efficiency, resulting in a potential deviation between the measured body surface temperature and the actual body temperature.

To ensure accuracy, we strongly recommend installing the solution in an indoor environment.

Q: Will other heat sources such as coffee cups cause false alarms?

A: The cameras utilise human body detection technology to ensure other heat sources will not cause false alarms.

Q: Does a thermographic camera support the alarm function by default and does it support VMS linkage?

A: Yes, both the Standard and Enhanced systems have these functions.

Q: Can the accuracy of fever screening thermographic cameras reach $\pm 0.3^{\circ}\text{C}$?

A: The thermographic cameras are calibrated to an accuracy of $\pm 0.5^{\circ}\text{C}$.

A higher degree of accuracy is obtained by incorporating the blackbody and intelligent compensation unit which increases temperature accuracy to $\pm 0.3^{\circ}\text{C}$.

Q: Can the camera detect human bodies for temperature measurement?

A: The camera detects human bodies when screening and supports up to 30 people at one time. Individual one-to-one temperature measurement is still the most accurate method of temperature measurement.

Q: When can I use the fever screening function after a camera is turned on?

A: The cameras need to be warmed up before using. Turn them on and wait for 30 minutes.

System Installation:

- We supply and install a dual technology thermal camera with either $\pm 0.5^{\circ}\text{C}$ accuracy (Standard system) or $\pm 0.3^{\circ}\text{C}$ accuracy (Enhanced system with body calibration).
- Camera positioning is site dependant but is typically fitted at the main entrance or thoroughfare.
- We can provide a PC or laptop with temperature monitoring software installed.
- We can link the system to visual or audio alarms as well as turnstiles, barriers or access control systems to prohibit the admission of any individual displaying a high temperature into the building or site.

Please contact us for solution pricing







To find out how we can help you


Call: **01322 479652** or visit **www.clearway.co.uk**

clearway
BUILDING SECURITY & SUPPORT

Clearway Environmental Services (UK) Ltd.
Fountain House, Anchor Boulevard, Crossways Business Park,
Dartford, Kent DA2 6QH

Our Solutions

Standard Body Temp Detection System Package		Enhanced Body Temp Detection System Package	
	<p>Thermographic Bullet Body Temperature Camera, 160 X 120 Thermal, 4MP Optical, 6mm lens</p> <p>Temperature accuracy: $\pm 0.5^{\circ}\text{C}$</p> <p>24 VAC/12 VDC/PoE</p> <p>Installation height: 1.5m</p> <p>Optimal Face distance: 0.8m-2.5m</p>		<p>Thermographic Bullet Body Temperature Camera, 384 X 288 Thermal, 4MP Optical, 15mm lens</p> <p>Temperature accuracy: $\pm 0.5^{\circ}\text{C}$</p> <p>24 VAC/12 VDC/PoE.</p> <p>Installation height: 1.7m-2.5m</p> <p>Face distance: 2m-7m</p>
	8-port 100Mbps Unmanaged PoE Switch plus 1 x network ports		8-port 100Mbps Unmanaged PoE Switch plus 1 x network ports
Standard System Includes		Enhanced System Includes	
1 x 3mm or 6mm Camera, Switch, Cable		1 x 15mm Camera, Blackbody Calibrator, Switch, Cable	
Optional Extras		Optional Extras	
Laptop	Tripod & Adaptor	Laptop	Tripod & Adaptor
Monitor	NVR Recorder	Monitor	NVR Recorder
Blackbody Calibrator			

Temperature Screening Metal Detector Door Solution	Wall-Mounted / Stand-Mounted Touch-free Temperature Screening Terminal
	
<p>All in one Metal detector door and thermal camera - no need to order the thermal camera separately.</p> <p>LCD screen with real time temperature display and people counting statistics.</p> <p>Light & sound alarm.</p> <p>Accuracy: $\pm 0.5^{\circ}\text{C}$</p> <p>Note: if accuracy of $\pm 0.3^{\circ}\text{C}$ is needed, then blackbody calibrator is required to order separately</p> <p>Range: $+30^{\circ}\text{C} - +45^{\circ}\text{C}$</p>	<p>LCD touch screen.</p> <p>Thermographic technology, temperature range: $+30^{\circ}\text{C} - +45^{\circ}\text{C}$, Accuracy: $\pm 0.5^{\circ}\text{C}$</p> <p>Temperature screening of forehead.</p> <p>Authentication distance: 0.5m - 1.5m, height: 1.2m - 1.9m.</p> <p>Temperature screening with visual results and audio prompt.</p>

To find out how we can help you

Call: **01322 479652** or visit **www.clearway.co.uk**

clearway
BUILDING SECURITY & SUPPORT

Clearway Environmental Services (UK) Ltd.
Fountain House, Anchor Boulevard, Crossways Business Park,
Dartford, Kent DA2 6QH