

Clearway inView CCTV Tower

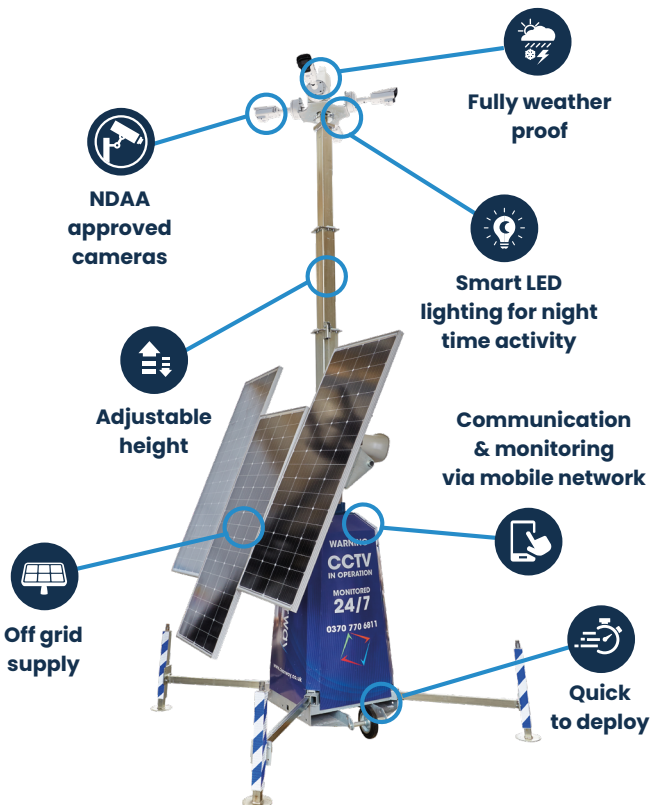
Easily transportable, fully power independent, 24/7/365 visual security with rapid installation and minimal maintenance - ideal for large site coverage.



Overview

Clearway's inView CCTV Tower is the perfect standalone solution where remote CCTV security and monitoring are required. Easily transportable and set-up in minutes, it can be positioned in the most inaccessible locations yet give 24/7/365 visual security with minimal maintenance.

This **rapid deployment telescopic tower** is designed to run on mains or solar power, boasts extensive coverage and provides a highly visible deterrent. With 3 x NDAA bullet cameras providing a comprehensive view and the utilisation of intelligent analytics, it will detect intrusion activities and instantly notify our **NSI Gold Cat II Alarm Receiving Centre 24/7/365**.



Why Clearway inView CCTV Tower?

- ✓ Solar capability, no requirement for mains power
- ✓ Large site coverage with a single CCTV tower
- ✓ 3 x NDAA 4MP bullet camera, utilises leading-edge sensor technology, with a Super WDR low-light CMOS sensor for high-quality images in any lighting
- ✓ Integral Smart-IR LEDs provide up to 60m of effective IR range, ensuring any night-time activity is captured in full HD
- ✓ Communication & monitoring via the mobile network
- ✓ Arm / disarm features
- ✓ Fully weatherproof
- ✓ Independent functionality
- ✓ Rapid setup
- ✓ Supported by our in-house NSI Gold Cat II Alarm Receiving Centre (ARC)

Applications

- Large open spaces
- Open car parks
- Construction sites
- Sports grounds
- Agricultural locations
- Outdoor events
- Music festivals
- Storage yards
- Housing developments
- Warehousing
- Utility sites
- Public access facilities
- Vacant properties



Leading edge technology

With stunning images and incredible low-light performance, **3 x NDAA 4MP bullet cameras**, it utilises leading-edge sensor technology, with a Super WDR low-light CMOS sensor for superior-quality images in daytime or night-time settings. Timed arm and disarm and communication via the mobile network all come as standard. Fully weatherproof, the tower can be left **unmanned for long periods** of time and can be **rapidly deployed** and quickly set up on-site.

A range of features can be triggered through the Intelligent Analytics including **automatic video recording, siren, email notification and ARC incident management**.

The Clearway inView CCTV Tower is ideal for large open spaces, open car parks, construction sites, sports grounds, agricultural locations, outdoor events and music festivals.

The scope and flexibility of the Clearway inView CCTV Tower **make this an incredibly versatile and cost-effective security solution**.

Features & benefits

- **In-built capacity for night illumination and infrared vision** to provide a visual deterrent and capture footage 24 hours a day. Capture clear images in any conditions, with footage shared with security teams or authorities as required.
- **Communication and monitoring** via a mobile network so there is no requirement for mains power or a fixed internet connection.
- **Arm/disarm features** enable customisation and control on the go, plus monitoring from a remote location. Remote access & control via a bespoke mobile app.
- **Fully weatherproof:** designed to withstand prolonged external exposure and adverse weather conditions.
- **Independent function:** designed to be left unmanned for long periods of time and, once installed, very little maintenance is required. Towers are powered by solar energy and high capacity batteries requiring minimum maintenance.
- **Swift setup:** quick installation and being fully live and monitored within a couple of hours.
- Supported by our in-house **NSI Gold Cat II Alarm Receiving Centre (ARC)**, around the clock monitoring, with trained responders on hand to initiate rapid response protocols when a genuine intrusion is identified.
- **Continuous recording, even outside of business hours.** Some companies turn off their CCTV towers outside of the armed schedule. We don't, our towers record 24/7/365 regardless of your operational hours.





DATA SHEET

Clearway inView CCTV Tower

NSI Gold Cat II Alarm Receiving Centre (ARC)

At Clearway we have our own high security, 24/7 - 365, NSI Gold Cat II Alarm Receiving Centre (ARC), which provides complete peace of mind to all of our clients.

This facility removes the headache, expense, and duplication of energies in providing facilities and staffing on projects where temporary monitoring and detection is required. On their behalf we are licensed to monitor, react to alerts, and deal directly with incidents whilst operating a professional and transparent service to the highest recognised and audited standards in the UK.



12-11-2021 Fri 09:20:04



Time-lapse

Implementing time-lapse recording via CCTV allows any scene or event to be recorded over a long period of time, capturing changes at preset continual time intervals.

Time-lapse video recording is ideally suited to situations such as construction sites, flood risk areas, transport monitoring, civil engineering, etc.



RAPID DEPLOYMENT

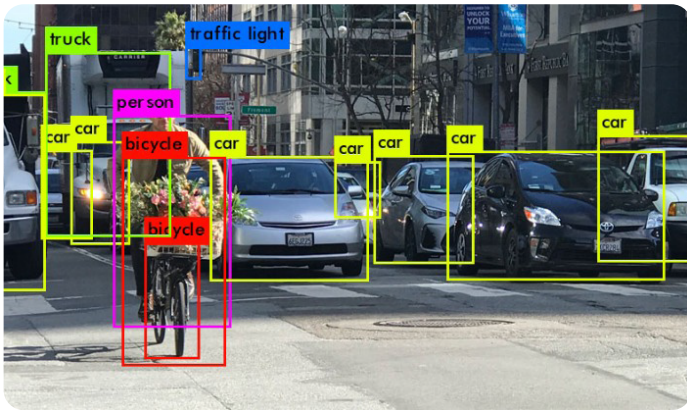
Clearway can deploy the inView CCTV Tower rapidly in urgent situations and can be installed and up and running in no time.

Whether short-term interim measures to defend premises or assets following a break-in, or a permanent installation to mitigate an ongoing safety threat.





Optional extras



Analytics and Artificial Intelligence

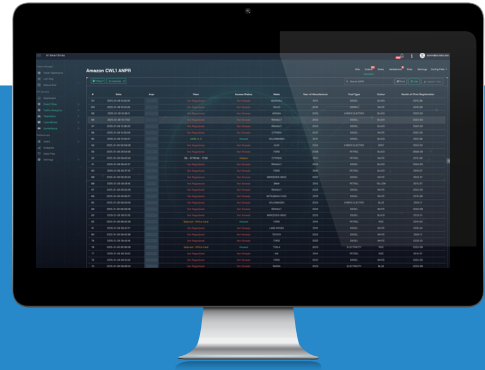
Artificial Intelligence technology allows for accurate detection and differentiation of humans, vehicles and animals in a wide range of situations, using day or night vision.

Video analytics process live video in real time and transform it into intelligent data that is used to detect and track objects in the video stream. This information forms the basis on which to perform certain actions, such as:

- Line monitoring/incursion detection
- Loitering behaviour monitoring
- Traffic monitoring flow
- Stopped vehicle detection
- Noise change detection
- Accurate alarm filtering
- Fly tipping with vehicle identification for prosecutions

PPE Monitoring & Compliance

Talk to us about PPE Monitoring & Compliance and protect your teams and reduce your liability with an automated AI-powered edge and cloud based solution.



Automatic Number Plate Recognition (ANPR)

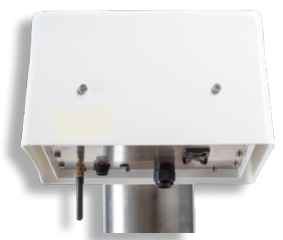
Automatic Number Plate Recognition cameras provide an accurate method of controlling vehicle eligibility to enter prescribed areas, such as car parks or business premises. ANPR also allows organisations to manage vehicle activity through collation of visitor data, and to effect measures for parking overstay, or access to restricted areas.

Environmental Monitoring



The Clearway inViro Air Quality Monitoring System is the latest in smart environmental technology. It comes with both battery and solar powered options; eliminating the need for any hard wire installation and making it quick and easy to deploy.

- Data is easily collected, analysed and shared
- Accurately monitors and senses multiple pollutants – particulates and gases
- Suitable for outdoor and indoor use
- Temperature stability – tested in both sub zero and sub Saharan African temperatures
- MCERTS accredited



Ideal for outside schools, hospitals and in construction and demolition environments, as inViro can support dust management/environmental monitoring plans.



Clearway Fixed inView CCTV Tower

Current-connected perimeter protection up to 120 m

Specification	
Intended use:	Rapid deployment Mobile CCTV Tower offering continuous surveillance, even without mains power
Monitoring capabilities:	<ul style="list-style-type: none"> 24/7/365 direct connection with Clearway NSI Gold Cat II Alarm Receiving Centre IP loudspeaker intruder warning (output 20w)
Power supply:	<ul style="list-style-type: none"> 4 × 12V 130 AMP batteries Victron Solar Panels each: <ul style="list-style-type: none"> – Rated Maximum Power: 215w – Voltage at Pmax: 40.11V – Current at Pmax: 5.36A – Dimensions: 1580 × 705 × 35 Fuel cell
Camera:	<ul style="list-style-type: none"> 3 x NDAA 4MP fixed bullet cameras day/night view (detection range up to 60m) 4MP (2592 × 1944) / QHD (2560 × 1440) resolution
Clearway App:	Mobile app management: <ul style="list-style-type: none"> Secure real-time system monitoring & management Notifications of activations with full access to alerts & images
Connectivity:	Non-steered global multi-network roaming SIM cards on 4G and 5G networks globally. (Requires no existing site infrastructure)
Transport dimensions:	L W H (1.25 m 1.25 m 2.62 m)
Footprint/mast height:	L W H (2.14 m 2.14 m 5.90 m) (fully extended)
Weight:	450 kg

inView value-add services:

- Enhanced site management including, access control, suspicious object detection, ANPR
- Data services including traffic/footfall monitoring, people detection, vehicle speed analysis, stopped vehicle detection, PPE monitoring & compliance

Discover More

T: 0370 770 6811 E: enquiries@clearway.co.ukwww.clearway.co.uk

Clearway PTZ inView CCTV Tower

Current-connected perimeter protection up to 100 m

Specification	
Intended use:	Rapid deployment Mobile CCTV Tower offering continuous surveillance, even without mains power
Monitoring capabilities:	<ul style="list-style-type: none"> 24/7/365 direct connection with Clearway NSI Gold Cat II Alarm Receiving Centre IP loudspeaker intruder warning (output 20w)
Power supply:	<ul style="list-style-type: none"> 4 × 12V 130 AMP batteries Victron Solar Panels each: <ul style="list-style-type: none"> – Rated Maximum Power: 215w – Voltage at Pmax: 40.11V – Current at Pmax: 5.36A – Dimensions: 1580 × 705 × 35 Fuel cell
Camera:	<ul style="list-style-type: none"> 1 × 2 MP 25X IR Network Speed Dome PTZ High quality imaging with 2 MP resolution, up to 60 fps Excellent low-light performance via Powered by DarkFighter technology Clear imaging against strong back lighting due to 120 dB WDR technology 25 x optical zoom Up to 50m IR range
Clearway App:	Mobile app management: <ul style="list-style-type: none"> Secure real-time system monitoring & management Notifications of activations with full access to alerts & images
Connectivity:	Non-steered global multi-network roaming SIM cards on 4G and 5G networks globally. (Requires no existing site infrastructure)
Transport dimensions:	L W H (1.25 m 1.25 m 2.62 m)
Footprint/mast height:	L W H (2.14 m 2.14 m 5.90 m) (fully extended)
Weight:	450 kg

