



WHITE PAPER

Martyn's Law and the future of public space security:

a practical guide for UK venue operators



July 2025

Contents

1. Executive Summary	3
2. Background & Legislative Overview Deployment	3
3. Who will be affected?	3
4. Legal and Operational Implications	
5. How to prepare: a 5-Step Framework	4
6. Technology in practice: the role of AI, CCTV, and Smart Surveillance	5
7. Example Case Scenarios	5
8. How Clearway can help	6
9. Final thoughts: a safer UK for all	6
10. Next steps	6



1. Executive Summary

Public safety in the UK is undergoing a profound transformation with the introduction of Martyn's Law, formally the Terrorism (Protection of Premises) Bill. Designed to ensure consistent security practices across all public spaces, the legislation aims to create a common framework of protective measures across a wide range of public venues, mandating new responsibilities, training, and infrastructure for venue operators.

This white paper outlines the legal and operational implications of the law, the venues it affects, and suggests a step-by-step approach to preparing for compliance. It also explores how emerging technologies like AI and smart CCTV are elevating public safety and how Clearway can support proactive compliance with advanced, human-friendly security solutions.

2. Background & Legislative Overview Deployment

Martyn's Law is named in memory of Martyn Hett, one of the 22 victims of the Manchester Arena bombing in 2017. The attack exposed serious shortcomings in venue security and response readiness. Martyn's Law was proposed to ensure public spaces are better prepared for terror-related incidents.

The law introduces mandatory security measures for venues based on capacity, type of use, and level of risk. It aims to:

- Establish a baseline of security preparedness
- Create clear lines of accountability
- Act as a deterrent to would-be attackers
- Provide flexibility to adapt security guidance as threats evolve

The legislation sets out a tiered approach:

- **Standard Tier (100–800 capacity):** Requires low-cost, practical measures such as staff training, basic procedures, and emergency planning.
- **Enhanced Tier (800+ capacity):** Requires more robust systems including CCTV upgrades, professional risk assessments, physical security enhancements, and detailed contingency plans.

At the time of drafting this White Paper, Martyn's Law has been passed and will come into force after a 24-month implementation period, meaning it's expected to be fully operational in 2027, with phased compliance deadlines from 2025. It will be introduced nationally across England, Wales, Scotland and Northern Ireland, and enforced across a wide variety of premises.

3. Who will be affected?

Martyn's Law applies to a wide range of premises that are accessible by the public. Organisations responsible for these spaces will be legally required to take proportionate steps to ensure the safety of visitors.

Sectors impacted include:

- Stadiums and Arenas
- Concert Halls and Theatres
- Retail Parks and Shopping Centres
- Universities, Colleges, and Schools
- Places of Worship
- Public Buildings
- Transport Hubs
- Healthcare Facilities
- Festivals, Fairs, and Temporary Events

Understanding which tier a venue falls under and what is required will be essential for every operator.

4. Legal and Operational Implications

The law introduces clear legal obligations:

Clear legal obligations	
Accountability	establish clear lines of accountability for security - duty holders (typically the venue operator or manager) are responsible for compliance.
Training	staff must be trained in security awareness and emergency procedures.
Documentation	conduct and document detailed risk assessments - security plans must be recorded, reviewed, and shared as required.
Adaptability	security procedures must reflect evolving risks and intelligence.
Systems	install or upgrade surveillance, access, and alert systems.

To support enforcement of the regime, a new regulatory function will be established within the Security Industry Authority (SIA). Non-compliance could lead to enforcement action including compliance notices, monetary penalties and restriction notices and, critically, increased risk to public safety.

The wider financial implications of non-compliance could be significant; reputational damage, insurance implications or future event cancellations also need to be considered.



5. How to prepare: a 5-Step Framework

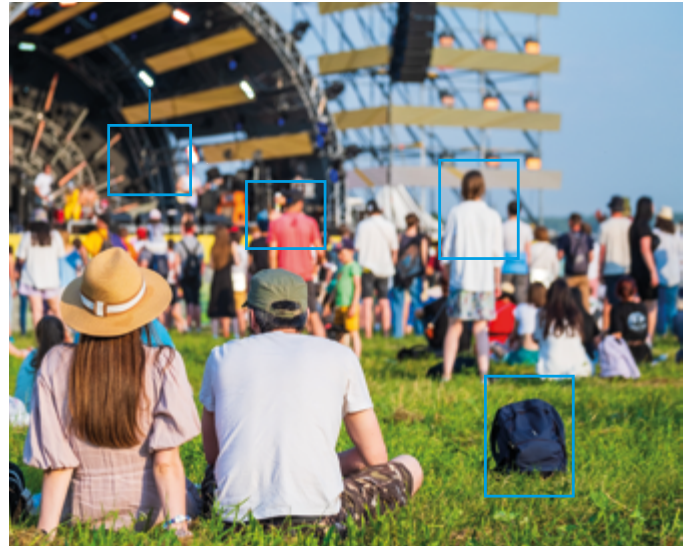
Clearway recommends this practical approach to readiness:



6. Technology in practice: the role of AI, CCTV, and Smart Surveillance

Modern security solutions go beyond passive monitoring. AI and smart CCTV systems provide proactive threat detection and valuable insights.

Key benefits include:	
Real-Time Detection	suspicious behaviour is identified instantly, allowing immediate intervention.
Pattern Recognition	AI learns what 'normal' looks like and flags anomalies.
Crowd Flow Analysis	detects overcrowding, bottlenecks, and suspicious loitering.
Integrated Systems	combine surveillance with access control, heat detection, and vehicle monitoring.
Temporary and Mobile Options	wireless, mast-mounted, and mobile tower CCTV solutions can be deployed flexibly for events and changing risk profiles.



7. Example Case Scenarios

Preparing a regional events venue

A 1,500-capacity events centre in the Midlands faced the challenge of meeting Enhanced Tier requirements. Clearway conducts a risk assessment that reveals vulnerabilities in access control and outdated CCTV.

Following our 5-step framework:

- CCTV upgrade with AI analytics
- Entry points secured with smart access controls
- Staff receive scenario-based emergency training
- A real-time monitoring link established with our ARC

The venue now exceeds the minimum legal standards and has peace of mind that it is prepared for a range of threats.

Preparing a community venue

A 600-capacity town hall hosts weekly events. After an audit, Clearway recommends procedural training, wireless CCTV towers, and a mass alert communication system. The venue achieves compliance in under 90 days and gains community reassurance through a visible security presence.



Clearway's NSI Gold Cat II Alarm Receiving Centre provides 24/7 monitoring with military-grade security, ready to escalate and respond to threats in real time.

8. How Clearway can help

Clearway has experience supporting venues of all sizes with scalable, legally compliant, and forward-thinking security solutions.

Our services include:

- Custom security risk assessments
- AI-enabled CCTV and surveillance solutions
- Smart access control systems
- Staff training and response planning
- 24/7 monitoring via our NSI Gold Cat II ARC
- Mobile and temporary security solutions for venues and outdoor events

Clearway ensures that clients not only meet the legal standard but elevate their protection standards in line with best practice. We ensure each client's strategy is tailored to their unique risk profile, infrastructure, and operational needs.

We are not only here to support compliance, we also ensure peace of mind, brand protection and business continuity.

9. Final thoughts: a safer UK for all

Martyn's Law is more than a legal framework; it's a call to protect lives in every public space. By acting now, venue operators can safeguard lives, meet their legal obligations, and contribute to a national effort to prevent terrorism and reassure the public.

Clearway is here to support this mission with proven solutions, expert guidance, and a shared commitment to protecting people.

10. Next steps

If you'd like to learn more about Martyn's Law and how to prepare your organisation, we offer:

- Free initial consultations
- Gap analysis services
- Bespoke security roadmaps

Get in touch at www.clearway.co.uk

Discover more [here](#)



"Security is evolving and so must the way we plan for it. At Clearway, we partner with organisations to turn complex requirements into clear, actionable strategies that protect people, assets, and reputations."

Daniel Meeajane, Sector specialist, Clearway

About Clearway

Clearway is an international security services provider specialising in the protection of people, property and assets. Growing organically and via acquisition, Clearway is managed by an experienced team with proven industry success and a clear vision for growth.



International coverage



Rapid response
24/7/365



Full service partner



NSI Gold Alarm Receiving Centre (ARC)

E: enquiries@clearway.co.uk

www.clearway.co.uk

