

# Security Trends for 2026

WHITE PAPER

How technology and insight  
are reshaping commercial  
protection



## Contents

<b>1. The Evolving Face of Commercial Security</b>	<b>3</b>
<b>2. Artificial Intelligence becomes the security standard</b>	<b>3</b>
<b>3. Integration and centralisation are essential</b>	<b>3</b>
<b>4. Predictive security through data and analytics</b>	<b>3</b>
<b>5. Sustainability and security go hand-in-hand</b>	<b>4</b>
<b>6. Compliance and risk governance under the spotlight</b>	<b>4</b>
<b>7. Human expertise remains irreplaceable</b>	<b>4</b>
<b>8. Security as a strategic business function</b>	<b>5</b>
<b>9. Conclusion</b>	<b>5</b>



## 1. The Evolving Face of Commercial Security

**The landscape of commercial security is undergoing one of its most transformative periods in decades. Driven by rapid advancements in AI, automation, data analytics, and sustainability, organisations are rethinking how they protect people, property and assets in a connected world.**

At Clearway Group, our 30+ years of expertise in commercial security, combined with a commitment to innovation, place us at the forefront of this evolution. This white paper explores the emerging trends defining the future of commercial security, and how Clearway continues to lead the industry forward.

### KEY TAKEAWAY

In 2026 the focus will be shifting from reactive security to predictive and intelligent protection, leveraging technology not just to respond, but to anticipate risk.

## 2. Artificial Intelligence becomes the security standard

**AI is no longer a buzzword, it's the backbone of modern surveillance.**

In 2026, AI-powered analytics are enabling faster, more accurate threat detection, reducing false alarms and enhancing operational efficiency.

Commercial organisations are turning to intelligent monitoring systems that combine computer vision, behavioural analytics and machine learning to identify anomalies before they escalate.

Clearway's own Intelligent Monitoring solutions integrate these technologies to deliver real-time, actionable insight, empowering clients to respond with precision and confidence.

### KEY TAKEAWAY

AI-driven systems don't replace human expertise, they enhance it, allowing security professionals to focus on strategy rather than reaction.

## 3. Integration and centralisation are essential

**Businesses are demanding more from their security infrastructure; not just protection, but visibility and control across multiple locations.**

The trend in 2026 is clear: integration. Combining CCTV, access control, fire safety, and alarm systems into unified, data-driven platforms will give security and operations teams a single, centralised command centre.

Clearway delivers scalable solutions that unify these systems, enabling smarter management and faster response times across nationwide portfolios.

### KEY TAKEAWAY

Integration drives efficiency, reduces cost, and enhances security intelligence - essential for businesses managing complex commercial estates.



## 4. Predictive security through data and analytics

**It's clear that the future of security lies in data.**

With the rise of connected sensors, IoT devices, and remote monitoring, organisations now have access to unprecedented volumes of information about their sites and operations.

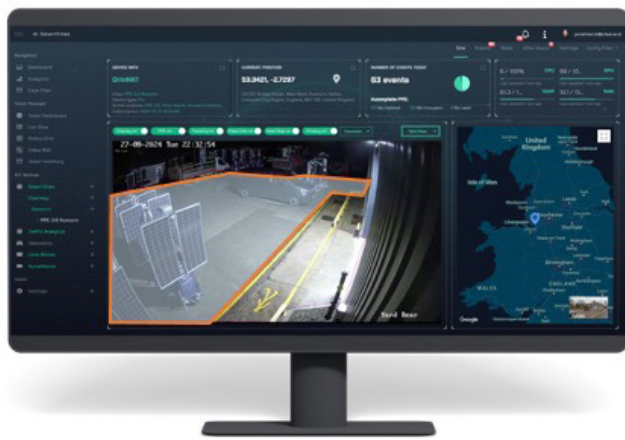
In 2026, leading companies will utilise that data to build predictive security models, identifying potential threats before they happen.

At Clearway, our AI-enabled CCTV and monitoring systems analyse patterns over time, helping clients move from reactive incident management to proactive prevention.

## KEY TAKEAWAY



Data transforms security from a cost centre to a strategic enabler, driving better decisions and measurable ROI.



## 5. Sustainability and security go hand-in-hand

**Sustainability is now an integral part of commercial strategy, and that includes security.**

In 2026, clients are demanding environmentally responsible solutions, from solar-powered CCTV towers to low-energy monitoring systems that reduce carbon footprint without compromising performance.

Clearway's investment in sustainable security technology; including solar surveillance systems and low-emission patrol services, helps organisations achieve their environmental goals while maintaining robust, round-the-clock protection.

## KEY TAKEAWAY



Sustainable security is good for business, protecting assets while supporting ESG commitments.

## 6. Compliance and risk governance under the spotlight

**With evolving legislation around data privacy, building safety, and employee welfare, compliance is now a critical component of security strategy.**

In 2026, the most secure organisations are those that take a holistic approach - aligning physical protection with regulatory assurance.

Clearway supports businesses across sectors with risk assessments, audits, and regulatory alignment, ensuring every site meets the highest safety and legal standards.

## KEY TAKEAWAY



Compliance is no longer optional, it's the foundation of trust and operational resilience.



## 7. Human expertise remains irreplaceable

**Despite technological innovation, human judgement remains the cornerstone of effective security.**

AI may detect patterns, but experience, empathy, and decision-making still belong to people.

Clearway's nationwide network of security officers, mobile patrols, and enforcement agents operate around the clock, bringing context and control to even the most complex situations.

## KEY TAKEAWAY



Technology enhances capability but trust, reliability, and professionalism remain uniquely human.

## 8. Security as a strategic business function

In 2026, security is no longer an operational afterthought, it's a board-level priority.

With risk diversification, rising threats, and complex compliance demands, organisations now view security as central to business continuity and reputation protection.

At Clearway, we help commercial leaders embed security into their strategic frameworks; ensuring resilience, continuity, and confidence from the ground up.

### KEY TAKEAWAY



Security is not just about defence, it's about enabling success.

## 9. Conclusion

### Leadership through innovation

The commercial security sector in 2026 is defined by intelligence, integration, and insight.

At The Clearway Group, we continue to lead this transformation; combining technology, compliance expertise, and international reach to deliver smarter, sustainable and scalable protection.

Whether securing a vacant property, protecting a nationwide portfolio, or monitoring critical infrastructure, Clearway stands at the intersection of innovation and reliability.

The future of security isn't just about protection, it's about prediction, prevention, and progress.



“Technology should enhance human judgement, not replace it. Our approach is to harness AI-driven monitoring, predictive analytics and sustainable infrastructure to elevate the role of security professionals. When intelligent systems and experienced people work together, security becomes not just a safeguard, but a strategic business enabler.”

ADAM BARRETT, MANAGING DIRECTOR, CLEARWAY TECHNOLOGY

E: [enquiries@clearway.co.uk](mailto:enquiries@clearway.co.uk)

[www.clearway.co.uk](http://www.clearway.co.uk)

